



SPRUGE MEADOWS

WINTER SERIES

January Classic

January 27 & 28, 2018

February Classic I

February 3 & 4, 2018

February Classic II

February 17 & 18, 2018

February Classic III

February 24 & 25, 2018

Competitions For Every Level





SPRUGE MEADOWS
2018 Winter Classic
Series of Tournaments

JANUARY CLASSIC

January 27 & 28

Page 17

Closing date: January 17

FEBRUARY CLASSIC I

February 3 & 4

Page 22

Closing date: January 17

FEBRUARY CLASSIC II

February 17 & 18

Page 28

Closing date: February 7

FEBRUARY CLASSIC III

February 24 & 25

Page 33

Closing date: February 7

Letter to Athletes	3
General Information	4
Equestrian Canada Rules & Regulations	14

Dear Athlete,



The Spruce Meadows team is excited to continue to offer you, the athlete, some great events over the months of January, February and March.

At Spruce Meadows we understand athletes. We know you're always eager to improve your skills and excel in the sport of show jumping. We believe that we can provide you with an affordable and Canadian solution to help you attain your goals. Spruce Meadows is proud to continue to offer a variety of divisions – tailored to your needs – with courses created by top course designers.

The Spruce Meadows facilities are world class and, for these winter tournaments, the team has the opportunity to showcase the sport. Permanent stabling will be available, the Riding Hall arena will be used as a large heated indoor warm up ring, and the competitions will be held indoors in the beautiful and adjacent Equi-Plex ring.

Please join us for the 2018 season. We hope that you will enjoy the facilities, the variety of events, the experience, and the true value of the quality tournaments we have to offer.

Best of luck,

The Southern Family

Marg, Nancy + Linda

GENERAL INFORMATION**Tournament Office Phone: (403) 974-4200****Fax: (403) 974-4266 E-mail: tournaments@sprucemeadows.com**

All mail and faxes should be sent to the attention of:

Spruce Meadows Tournament Office*Mail:* **18011 SPRUCE MEADOWS WAY SW****CALGARY, ALBERTA. T2X 4B7***Fax:* **403-974-4266***Email:* **tournaments@sprucemeadows.com***Website:* **<http://www.sprucemeadows.com>**

GENERAL RULES & REGULATIONS

The Spruce Meadows Tournaments will be conducted according to the current rules of Equestrian Canada, the F.E.I. and the Organizing Committee of Spruce Meadows.

In entering Tournaments at Spruce Meadows you and your team (owners, trainers, grooms, family members, agents, etc.) have agreed to honour the General Information as specified in this Prize List and on the entry form. Your agreement and acceptance of all rules, regulations and Spruce Meadows decisions is indicated by competing at our Tournament. If the number of entries so warrants and in order to give each competitor the best possible experience, competitions may be adjusted to run on alternative days and Friday may be added. This decision will be made as soon as possible after the closing date.

All horses coming on to the grounds for the January/February Tournaments must provide proof of Equine Influenza and EHV vaccinations (valid for 6 months from the inoculation date, not valid within 7 days of arrival to the grounds). All competitors must be in good standing with their National Federation. The Spruce Meadows Executive and Organizing Committee will closely monitor any developments regarding any potential biosecurity issues and will change the procedures and requirements for horses entering the grounds as needed.

OFFICE HOURS

Please check in with the Tournament Office upon arrival - the office is open from 10:00am to 4:00 p.m. daily unless otherwise specified. During Tournaments, the Tournament Office is located in the North Meadows Office - south of **G** barn in the stable area. The North Meadows Office will open the same day as stabling.

The Tournament Office is closed on the Monday after every tournament, all statutory holidays, and Tuesday February 20.

VEHICLES, PARKING & RVS

There will be designated parking areas on the grounds for competitors' vehicles & trailers. Please do not park in front of any barn access doors or block alleyways - vehicles and trailers will be towed if parked in restricted areas.

There are no serviced RV sites available during these Tournaments. If you will

be camping in your RV, you must be independent. Power will be available on a first come first served basis, for a set fee. Please phone ahead to arrange a parking location and billing.

The stabling area will be closed to vehicle traffic from Friday night through to Sunday evening each week. Please plan your arrivals/departures accordingly. All trailers must park at the north end of Lot 11. Passenger vehicles parking is available at the south end of Lot 11 and Lot 7.

There is a 5km/hour speed limit on the Spruce Meadows grounds. Failure to abide may result in fines or expulsion from the grounds.

FEED AND BEDDING

Initial bedding is not provided. Feed and bedding must be ordered from the Tournament Office **before 11:00 am for same day delivery**. Orders received after 11:00 am may not be delivered until the next day.

Feed and bedding can be pre-ordered by fax (403) 974-4266 or via our website. After your horse has arrived on the grounds all feed orders **MUST** be made in person. Spruce Meadows does not split feed charges onto multiple accounts.

Discrepancies in deliveries will not be considered unless brought to the attention of the Tournament Office on the day of scheduled delivery.

All stalls must be cleaned and refuse placed in designated bins by 8:00 a.m. daily.

PETS

Pets must be on a leash **AT ALL TIMES** while on the Spruce Meadows grounds. Unleashed pets will be taken by our staff to a safe area on the property. Release may be obtained after **payment of a \$100 fine**, applied to the horse's account. Further offences may result in being asked to leave the tournament grounds and forfeiture of fees paid. Acceptance into future tournaments will be at the discretion of the Organizing Committee. Dogs that are aggressive or vicious will be banned from the grounds.

SMOKING

There is a strict **NO SMOKING** policy in all Spruce Meadows buildings, and within 10 feet of any entrance thereof. Competitors are responsible for the actions of all their staff, owners, trainers, etc. Any person caught smoking in any building or outside an entrance will be assessed a fine of \$250, applied to the horse's account. Further offences may result in being asked to leave the Tournament grounds and a forfeiture of Tournament fees paid.

WASH RACKS & LOST & FOUND

WASH RACKS: There will be indoor wash racks available. To avoid flooding please dispose of any manure deposited in the wash racks. **A \$100 fine will be assessed to those who fail to clean up after themselves.**

LOST & FOUND: The Lost & Found Bin is located in the Tournament Office. Items not claimed within one week of the end of the Tournament will be donated to charity. **PLEASE KEEP A CLOSE WATCH ON YOUR BELONGINGS!**

ACCEPTANCE OF ENTRIES

SPRUCE MEADOWS DOES NOT SEND OUT CONFIRMATIONS OF RECEIPT. IT IS YOUR RESPONSIBILITY TO CONTACT THE TOURNAMENT OFFICE (403) 974-4200 TO CONFIRM YOUR ENTRY HAS BEEN RECEIVED IN FULL AND IS LEGIBLE.

Entries will be stamped with the date when received by the Tournament Office. **ENTRIES ARE ONLY CONSIDERED VALID IF SIGNED BY THE PERSON RESPONSIBLE AND ACCOMPANIED WITH FULL PAYMENT** and when so stamped. The date of the Tournament Office stamp is final in determining whether an entry is received on time. When mailing, it is **your responsibility** to allow sufficient time for entries to reach the office by **5:00 P.M. MST OF THE CLOSING DATE**. Entries are NOT considered to be accepted if handed to any member of the Spruce Meadows staff at any location other than the Tournament Office.

Note: If it is necessary to limit entries, the entry deadline will be used to determine the acceptance order.

BY SIGNING THE ENTRY FORM, COMPETITORS/PARENTS/PERSONS RESPONSIBLE ARE TESTIFYING THAT THE ENTRY IS ELIGIBLE FOR THE COMPETITIONS ENTERED, SUBSEQUENT DETERMINATION THAT SUCH IS NOT THE CASE, WILL RESULT IN ELIMINATION.

Note: If you have purchased a Spruce Meadows package, your entry must still be submitted in full and on time to be eligible for acceptance. without a late fee.

COMPLETION OF ENTRY FORM

YOUR ENTRY FORM MUST BE SIGNED. IF YOU ARE A MINOR, YOUR LEGAL PARENT OR GUARDIAN MUST SIGN. TRAINER SIGNATURES ARE NOT ACCEPTABLE.

Your entry must include the following:

1. Full Payment with signatures **MUST** accompany entry form.
2. **PAYMENT:** Please pay by Credit Card (Visa, MC, AMEX), or Cheque in Canadian funds made payable to Spruce Meadows Ltd. **SPRUCE MEADOWS DOES NOT KEEP CREDIT CARD NUMBERS ON FILE.** Please be sure to include the EXPIRY DATE, and CARDHOLDER SIGNATURE. **DO NOT** SEND CHEQUES DRAWN ON AN AMERICAN BANK ACCOUNT MARKED "PAYABLE IN CANADIAN FUNDS". American Cheques for the **U.S. DOLLAR EQUIVALENT** of your entry fees are acceptable (please call Spruce Meadows for the exchange rate). If you are redeeming a Package, please include the order number with your entry form. **A credit card must also be provided for any additional charges (e.g. bedding).**
3. All prize monies are issued to the owner.
4. Horse name on entry **MUST** match the horse name listed on any official documents. No horse listed as 'Entry' will be accepted.
5. Proof of Influenza and EHV vaccinations, valid for 6 months but not within 7 days of arrival to the tournament. The name on the vaccination receipt **MUST MATCH** the name on the entry.
6. All Canadian competitors AND owners **MUST** provide proof of their current Equestrian Canada and Provincial Sport Licenses with their entry form. Anyone failing to provide proof of memberships by the Check-In date **will** be responsible for temporary membership charges.

LATE ENTRY FEE

LATE ENTRIES may be accepted from the closing date up to the start of the competition **subject to the following conditions:**

- entry submitted in full, inclusive of all required numbers, signatures, and valid vaccinations
- approval of the Organizing Committee
- number of entries already received
- payment of the late fee: **\$125 PER HORSE**

The Organizing Committee may limit entries in a competition or a tournament in the interest of time. Late entries must be paid for by a credit card.

SUBSTITUTION OF ENTRIES

Horse substitutions may be submitted to the Tournament Office, in writing, **PRIOR TO CHECK-IN**. An entry may be substituted, in writing, for a fee of \$50, provided that the stabling requirements and entry payment are the same, and that neither entry has already competed at a 2018 January/February Classic Tournament. Substitutions are required to fill out a completed entry form. If either horse has already competed at a 2018 January/February Classic Tournament, the substitution fee is \$85. **Substitutions done at the time of Check-In will be subject to double the substitution fee. Proof of vaccinations must be received prior to the substitution being approved.**

ALL SUBSTITUTIONS ARE SUBJECT TO APPROVAL FROM THE ORGANIZING COMMITTEE. Payments that have already been processed will not be refunded. It is up to the parties involved in the substitution to handle any billing requirements, however a new form of payment may be used on close-out.

CANCELLATION OF ENTRIES

1. Spruce Meadows will assess charges on cancelled entries as follows:

CANCELLING ENTRIES	REFUND AMOUNT	Special Note
Before closing date	• 100% Refund of ALL FEES Packages are non-refundable	n/a
After the closing date and up to 5 full days prior to the start of the Tournament January Classic -> January 23 February Classic I -> January 30 February Classic II -> February 13 February Classic III -> February 20	• 100% Refund of Entry/ Drug/Paramedic/Stall** fees - ADMINISTRATION FEE NOT REFUNDED Packages are non-refundable	Spruce Meadows must receive written notice of cancellation - YOU must confirm receipt of notice*

CANCELLING ENTRIES	REFUND AMOUNT	Special Note
5 days prior to start of the Tournament up to 4:00 P.M. the day before the first competition	<ul style="list-style-type: none"> • 100% of Entry/Drug/Paramedic fees (50% if no vet/doctor note received) - STALL FEES NOT REFUNDED** - ADMINISTRATION FEE NOT REFUNDED Packages are non-refundable	Spruce Meadows must receive A WRITTEN CERTIFICATE^ OF DISABILITY FROM A VETERINARIAN/ DOCTOR AT TIME OF CANCELLATION*
During Tournament	NO REFUND	N/A

**It is your responsibility to call the Tournament Office, (403) 974-4200, to ensure the written notice has been received.*

**The stall(s) reverts to Spruce Meadows for reassignment.

^Written certificates of disability must be on veterinarian / clinic letterhead and signed by the veterinarian or doctor.

2. COMPETITORS CANCELLING THEIR ENTRIES AFTER 4:00 PM THE DAY BEFORE THE FIRST COMPETITION, REGARDLESS OF THE REASON, WILL NOT BE ELIGIBLE FOR A REFUND.

NOTE: Competitors are asked to advise the Tournament Office immediately when they are scratching from a competition or remainder of the Tournament.

3. Packages are non-refundable.

STABLING & EXTRA STALLS

Please clearly mark on your entry form with whom you would like to be stabled. Spruce Meadows makes every effort to assign the requested stabling and regrets that any changes made after the closing date may not be able to be accommodated.

Extra stalls cannot be split between multiple horse accounts.

If your horse(s)/tack has arrived before the date stated on your entry form, your account will be adjusted accordingly.

Stabling is not required for these tournaments.

STABLING / EXTRA GROOM CHARGES PER STALL:

\$100 / weekend* / stall plus GST

JANUARY CLASSIC • January 27 & 28

FEBRUARY CLASSIC I • February 3 & 4

FEBRUARY CLASSIC II • February 17 & 18

FEBRUARY CLASSIC III • February 24 & 25

*Stabling runs from 12:00pm Friday - Sunday evening each weekend.

Additional Nights: \$75 / night / stall plus GST

Day Stalls (cannot stay overnight) \$75 / day / stall plus GST

ARRIVALS

1. Please state on your entry form if you will be arriving early. **IF YOUR ARRIVAL CHANGES, PLEASE CALL OUR OFFICE.**
2. Due to limitations on our facilities, horses being brought to Spruce Meadows which are not competing will **NOT BE ACCOMMODATED ON THE GROUNDS.** Other

stabling in the immediate vicinity is usually available.

3. **UNDER NO CIRCUMSTANCES MAY A HORSE BE PLACED IN A STALL TO WHICH IT HAS NOT BEEN ASSIGNED. VIOLATION OF THIS RULE WILL RESULT IN A \$250 FINE TO THE HORSE'S ACCOUNT.** Please inform the Tournament Office of any changes to horse placement within your assigned area. **COMPETITORS MUST NOT MOVE FROM THEIR ASSIGNED BLOCK OF STALLS WITHOUT THE PERMISSION OF THE TOURNAMENT OFFICE.**
4. **If you are arriving after 5:00 PM, please let the Tournament Office know - staff are not available after hours.**
5. Under no circumstances can a stall door be blocked.
6. No vehicles are permitted inside of a barn.

HORSE BRIDLE NUMBERS

1. Horse bridle numbers must be worn by horses at all times (including in the exercise and competition areas) with the exception of in the stall - FEI Article 252.5.
2. Bridle numbers are available for purchase at the Tournament Office for \$25 a set. Competitors are welcome to use their own numbers provided they are easily legible (please see the Competitions Manager if you have concerns about your bridle numbers). The use of a wrong number or having no number may result in disqualification from the competition and/or the Tournament.

ENTRY FEES AND STARTING

1. A horse must be entered in at least one competition per day they wish to compete and pay the associated entry fee(s) to be accepted in the Tournament. You will be automatically entered in the competitions as indicated on your entry form as long as Spruce Meadows has record of all required membership numbers, signatures, vaccinations and payment.
2. You may add or withdraw from competitions up until the day before the competition (please see the Tournament schedule for deadlines). Any competitions added after this time will be subject to a \$10 late fee in addition to the entry fee, and the horse will be 'first in' for that competition unless otherwise stated. Competitions dropped after this time will not be refunded unless a vet note is provided at least two hours prior to the start of the competition. **Same day adds may not be able to be accommodated.**
3. **THERE IS NO LIMIT ON THE NUMBER OF HORSES A RIDER MAY COMPETE ON PER COMPETITION. HOWEVER THE HORSE** may only go once in each competition (ex. trainer & student cannot ride the same horse in the same competition).
4. There will be no presentations after the completion of CLEAR ROUND competitions. Riders will receive a red ribbon as they leave the ring if they have jumped a clear round. The course will be one round over a minimum of 8 numbered jumps and may include at least one double.
5. **Hors Concours entries are not permitted.**

SECOND RIDER

If you would like a second person to ride your horse, please ensure that person has filled out and signed a SECOND RIDER WAIVER and has provided ALL required memberships PRIOR TO BEING STARTED (DECLARED) FOR A COMPETITION - these forms are available at the Tournament Office. If the second rider is a minor, the parent/legal guardian must also sign before the minor will be allowed to be started (declared) for a competition. Riders who have not submitted this waiver will have their results disqualified and any prize money won will be revoked.

Rider changes may NOT be made at the ring. All rider changes MUST be made in person at the Tournament Office. No exceptions.

TIME SCHEDULES

Tentative schedules will be available at the Tournament Office and will be posted on the Spruce Meadows website. Please note that Schedules can change every single day during the Tournament.

PRACTICE AREAS & SCHOOLING HOURS

Schooling is only permitted in designated areas and at designated times.

TOURNAMENT AREA CONDUCT

1. No persons other than the officials or staff on duty may enter the competitive ring without the permission of the Competitions Manager or the Organizing Committee.
2. Those who enter the Competitive Ring for any reason must be **NEAT AND SUITABLY ATTIRED** in the opinion of the Hitching Ring officials. Hunt coats and light coloured breeches are required for riders in all competitions including clear rounds. Half chaps/boots must be brown or black.
3. **Saluting Protocol:** Please stay alert to the Gate person's instructions on where to salute once in the ring.
4. The Organizing Committee may determine to preload or not preload at any time during the competition.
5. Competitors are only allowed in the Competitive Ring when competing or when the course is clearly marked 'OPEN'.
6. The Organizing Committee reserves the right to limit the number of horses in the warm-up ring.
7. You must be on foot when leading a horse.
8. Turn-out paddocks are not available at these tournaments. Horses are not to be turned loose.

PRESENTATIONS

1. All competitors must be mounted when entering the Competitive Ring for presentations. Horses may not enter the Competitive Ring wearing a cooler.
2. Winners of each competition to a maximum of six must be present for presentations. **PLEASE ANTICIPATE IN ADVANCE THE NEED TO RIDE IN FOR YOUR PRESENTATION ON A WELL-MANNERED HORSE.** Competitors who do not comply will forfeit their prize money.

3. Your Cavalier's Salute to the sponsor's representatives on the last round of the Victory Gallop is your way of thanking them. Competitors who do not comply will forfeit their prize money.

PRIZES

ALL PRIZE MONEY WILL BE APPLIED TO THE HORSE'S ACCOUNT - any credits after the Tournament will be printed on a cheque. **The cheque will only be issued to the rider/owner as indicated on the entry form and will be paid out when the account is closed.** Unless otherwise indicated on the entry form, all prize monies are awarded to the owner.

CLOSE OUT

You must pay your tournament bill ("close out") with either cash, cheque, debit or credit card. If you are paying by card, **you must bring the physical card at the time you close out.**

Accounts not closed within 2 days of the end of the Tournament will be subject to a \$100 outstanding accounts fee, and the payment used will be that from the entry form.

All financial matters will be closed one week after the end of the tournament.

WITHHOLDING TAX

All Foreign competitors and/or foreign owned horses who win prize money are subject to Canadian Withholding tax at 15% as per Canada Revenue Agency (<http://www.cra-arc.gc.ca>).

PROTESTS

Spruce Meadows has never had an official protest in its history. Competitors have accepted favourable and unfavourable rulings in the spirit of good sportsmanship. Feel free to bring any concerns to our Competitions Manager for consideration. If you insist on making an official protest, it shall be made in writing and delivered to the Tournament Secretary accompanied by a deposit of \$100 cash which will be forfeited if the protest is not sustained.

ORGANIZING COMMITTEE DECISIONS

1. **IT IS IMPORTANT TO UNDERSTAND THAT INTERPRETATIONS OF EXISTING RULES AND REGULATIONS AND THE INVOKING OF ADDITIONAL RULES AND REGULATIONS TO COVER UNFORESEEN CIRCUMSTANCES ARE THE SOLE RESPONSIBILITY AND AUTHORITY OF THE ORGANIZING COMMITTEE. ALL OWNERS, TRAINERS, COMPETITORS AND GROOMS AGREE TO THE ACCEPTANCE OF THESE INTERPRETATIONS AND ADDITIONAL RULINGS BY VIRTUE OF YOUR SIGNED ENTRY.**
2. It is the objective of the Organizing Committee to run Spruce Meadows Tournaments on the highest possible level of sportsmanship. Judges, Course Designers, and Officials have been selected based on their knowledge and experience and their decisions in the competitions are their own responsibility. The Organizing Committee accepts no responsibility for their decisions.
3. The Organizing Committee is not bound by opinions of its staff, such as Veterinary Doctors, Tournament Office and Field Staff, in the interpretation of these rules.

EXCUSING OR DISQUALIFYING

1. Any act of discourtesy or disobedience to the Judges, Officials or Staff shall, at the determination of the Organizing Committee, result in disqualification. Such unacceptable behaviour will result in forfeiture of Tournament fees paid and prize money, and acceptance in future Tournaments will be determined by the Organizing Committee.
2. The Organizing Committee reserves the right to remove any groom, trainer, rider, parent, manager or owner or all of a related group from the Tournament without being liable for compensation.
3. Inhumane treatment of any horse on the grounds is forbidden; if a violation occurs the Organizing Committee has the right to disqualify the competitor from the Tournament. Such unacceptable treatment will result in forfeiture of Tournament fees paid and prize money, and acceptance in future Tournaments will be determined by the Organizing Committee. Refer to Code of Conduct for the Welfare of the Horse, F.E.I. Nov. 1990.
4. In jumping competitions, judges have the discretion to eliminate a competitor after a sufficient number of penalties have been incurred which prevent the athlete from qualifying for the final placing.
5. In the case of a disqualification of a horse or horses, the winner of the next succeeding prize shall take the prize that had been awarded to the disqualified horse(s) and the other prizes will be adjusted accordingly.

CODE OF CONDUCT

In consultation with the Officials, the following offences are considered grounds for disqualification by the Organizing Committee:

Unauthorized use of Spruce Meadows' materials (bedding or feed), equipment or machinery will result in disqualification of those involved. In addition, wilful damage to property as well as what the Organizing Committee considers to be unseemly or unsportsmanlike conduct, will cause the individuals involved to be disqualified. There will be no appeals on these types of Organizing Committee decisions. Spruce Meadows is committed to the highest standards of behaviour and sport, anticipating from its athletes and their associates similarly high world class conduct.

All of the people of Spruce Meadows, our professional staff, officials, technicians, sponsors, media people, volunteers and fans are dedicated to you, and will do everything possible to make these the best competitions you have ever experienced.

By entering the Tournament you are accepting all the rules and regulations including the Code of Conduct.

LIABILITY

All owners and competitors are personally responsible for damages to third persons caused by themselves, their employees, their agents or their horses. They are therefore strongly advised to take out third-party insurance providing full coverage for participation in equestrian events at home and abroad, and to keep the policy up to date.

Neither the Spruce Meadows Tournaments nor the Organizing Committee or owners of Spruce Meadows, nor any of its staff or agents shall be in any way liable for any accident, injury, damage, loss or for any other matter that may happen, from any cause or circumstances whatsoever, to exhibitors, competitors or members of their family or their agents or to any one on the Tournament grounds or to any animal or article exhibited or to any property brought on the Tournament grounds or for any other loss, claim, matter, circumstance or event whatsoever in connection with or arising out of or attributable to the Tournament or any journey to or from the Tournament.

It is to be understood and agreed that under no circumstances shall Spruce Meadows, its owners, agents, employees, or family be liable for any loss, damages, claims or costs occasioned or suffered by any exhibitor, competitor, members of their family, or their agents, directly or indirectly, howsoever arising, including without limitation, losses, damages, claims or costs as a result of Spruce Meadows, its owners, agents or employees negligence, and you agree to indemnify and save harmless Spruce Meadows, its owners, agents and employees from and against any and all liability arising out of any such loss, damages, claims or costs.



Rules & Regulations

Recognized Bronze Member Tournaments of
EQUESTRIAN CANADA

100 - 308 promenade Legget Drive
Ottawa, Ontario K2K 1Y6
Tel: (866) 282-8395
Fax: (613) 248-3484
<http://www.equinecanada.ca>

NATIONAL FEDERATION MEMBERSHIP

1. To enter these tournaments, all riders, owners & parents/persons responsible each must have a valid sport license with Equestrian Canada and their Provincial federation, or be bona fide members of their own National Equestrian Federation affiliated with the F.E.I.
2. **CURRENT RIDER AND OWNER EQUESTRIAN CANADA AND PROVINCIAL MEMBERSHIP NUMBERS MUST BE SUBMITTED WITH ENTRIES.**

BIRTH DATE

1. Riders who have not reached their 18th birthday as of January 1st of the current year, are classified as JUNIORS. All Juniors must state their birth date on the entry form, and birth certificates are to be made available upon request.

DRUG INSPECTION

As per Equestrian Canada rules, competitors will be assessed a \$3.50 fee per horse per tournament for drug fees at the January/February Classics.

Any horse entered in any competition at the Tournament may, while on the grounds be selected for equine medication control testing (Article A602.5).

EXERCISE AREA & HITCHING RING

Spruce Meadows applies the F.E.I. rules - for **ALL competitions in ALL rings at ALL Tournaments throughout the year.** This has been agreed upon in cooperation with Equestrian Canada.

Unauthorized schooling will result in forfeiture of Tournament Fees paid and prize money for all entries of the owner, trainer, competitor, groom and group involved, and acceptance in future Tournaments will be determined by the Organizing Committee.

RAPPING

At Spruce Meadows, you are NOT ALLOWED TO RAP YOUR HORSE IN ANY WAY WHATSOEVER AT ANY TIME. Violators will be disqualified from the Tournament and all prize monies will be forfeited. Starting fees will not be refunded. Article 243 of the F.E.I. Rules for Jumping Events will apply.

ORDER OF PERFORMANCE

1. The Order of Go for each competition will be drawn.
2. Special or unforeseen circumstances will be dealt with by the Organizing Committee and Officials on a case-by-case basis. Please refer to FEI Article 245.5. regarding two horses in a jump-off.
3. Any competitor not ready to enter the competitive ring when called will be eliminated. Fees will not be refunded in case of missed competitions.

TIES

All ties in jumper competitions will be broken on the basis of time to 100th of a second. As required in competitions run under Table A, Article 238.2.1, should there be equality of faults and time after the first round for first place only, there may be one jump-off over a shortened course against the clock.

HELMETS

It is mandatory that all persons mounted on a horse anywhere on the competition grounds wear protective headgear secured with a safety harness permanently affixed to the helmet.

Please refer to Article G102 of the 2017 Rules of Equestrian Canada, Section G Hunter, Jumper.

MANDATORY PRIZE LIST INFORMATION

Per Article A801, every entry at an EC sanctioned competition shall constitute an agreement by the person responsible that the owner, lessee, trainer, manager, agent, coach, driver or rider and horse shall be subject to the EC constitution and all rules of EC and any additional rules set by the competition. It is the responsibility of all individuals participating in any capacity in EC sanctioned competitions to be knowledgeable regarding the EC constitution and the applicable rules of EC and the additional rules, if any, imposed by the competition. Do not participate in this EC sanctioned competition in any capacity of you do not consent to be bound by the constitution and rules of EC and any additional rules imposed by the competition.

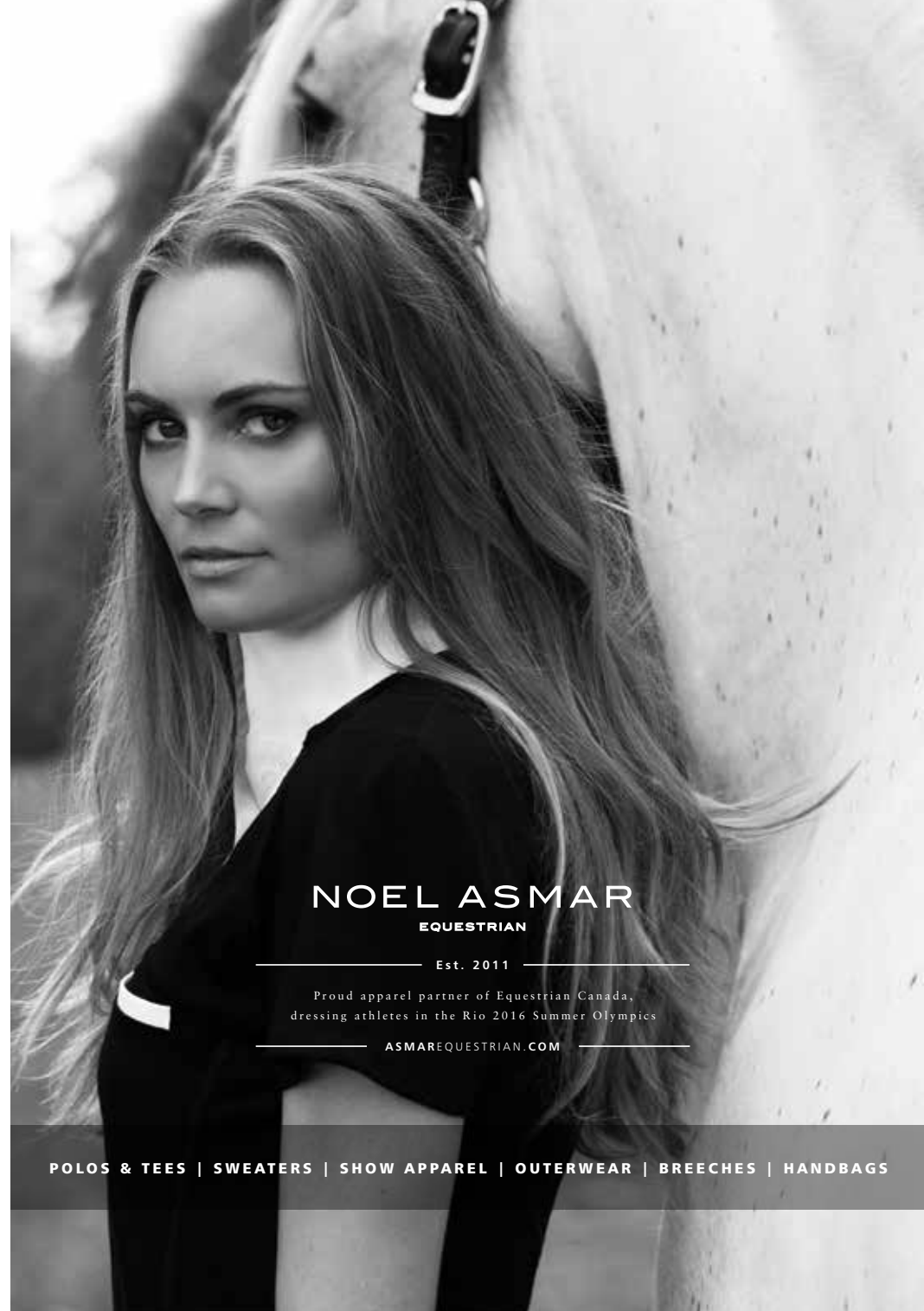
EQUESTRIAN CANADA STATEMENT OF PRINCIPLE

Equestrian Canada (EC), the national equestrian federation of Canada, supports adherence to humane treatment of horses in all activities under its jurisdiction.

Equestrian Canada is committed to:

- Upholding the welfare of all horses, regardless of value, as a primary consideration in all activities;
- Requiring that horses be treated with kindness, respect, and the compassion that they deserve, and that they never be subjected to mistreatment;
- Ensuring that owners, trainers, and exhibitors or their agents use responsible care in the handling, treatment and transportation of their horses as well as horses placed in their care for any purpose;
- Providing for the continuous well-being of horses by encouraging routine inspection and consultation with health care professionals and competition officials to achieve the highest possible standards of nutrition, health, comfort, sanitation and safety as a matter of standard operating procedure;
- Providing current information on Code of Practice for the Care and Handling of Equines and other equine health and welfare initiatives;
- Continuing to support scientific studies on equine health and welfare;
- Increasing education in training and horsemanship practices;
- Requiring owners, trainers and exhibitors to know and follow their sanctioning organization's rules and to work within industry regulations in all equestrian competitions;
- Reviewing, revising and developing competition rules and regulations that protect the welfare of horses;
- The standard by which conduct or treatment will be measured is that which a reasonable person, informed and experienced in generally accepted equine training and exhibition procedures, would determine to be neither cruel, abusive nor inhumane.

The Winter Series of Tournaments will operate under the 2018 Equestrian Canada Rules and Regulations. If there is a discrepancy between the Rules and Regulations listed herein and the 2018 Rules and Regulations of Equestrian Canada, the 2018 Rules and Regulations will take precedence.



NOEL ASMAR
EQUESTRIAN

Est. 2011

Proud apparel partner of Equestrian Canada,
dressing athletes in the Rio 2016 Summer Olympics

ASMAREQUESTRIAN.COM

POLOS & TEES | SWEATERS | SHOW APPAREL | OUTERWEAR | BREECHES | HANDBAGS

\$400
JANUARY CLASSIC
JANUARY 27 & 28, 2018

Part of the Classic Series of Tournaments

OFFICIALS

TOURNAMENT SECRETARY

Joanne Nimitz

COMPETITIONS MANAGER

Conor Charlton

JUDGE

Anne Reid Calgary, AB

COURSE DESIGNER

Joey Rycroft Calgary, AB

STEWARD

Sue Hawes Calgary, AB



Minimum **BRONZE LEVEL** Equestrian Canada memberships AND provincial memberships are required for **all competitors and owners** at this tournament.

Any changes to the entries must be made the day prior to each competition, by the deadline on the tournament schedule. You will be charged \$10 in addition to the entry fee for any competitions added after this deadline. Entry fees will not be refunded for those competitions withdrawn from after this deadline.

- You may enter as many horses as you wish in each competition during this Tournament. **HOWEVER THE HORSE** may only go once in each competition.
- You will be automatically entered in each competition indicated on your entry form if all required information (signatures, memberships, payment, etc) has been received.

YOU MUST CONFIRM RECEIPT OF YOUR ENTRY WITH THE SPRUCE MEADOWS TOURNAMENT OFFICE.

0.60M CLEAR ROUND

Eligibility: Open to all riders.

Jumps: 0.60m (2').

001 CLEAR ROUND JUMPER - 0.60M

Scoring: Clear Round

Entry Fee: \$30

002 CLEAR ROUND JUMPER - 0.60M

Scoring: Clear Round

Entry Fee: \$30

003 CLEAR ROUND JUMPER - 0.60M

Scoring: Clear Round

Entry Fee: \$30

004 CLEAR ROUND JUMPER - 0.60M

Scoring: Clear Round

Entry Fee: \$30

0.70M CLEAR ROUND

Eligibility: Open to all riders.

Jumps: 0.70m (2'3").

005 CLEAR ROUND JUMPER - 0.70M

Scoring: Clear Round

Entry Fee: \$30

006 CLEAR ROUND JUMPER - 0.70M

Scoring: Clear Round

Entry Fee: \$30

007 CLEAR ROUND JUMPER - 0.70M

Scoring: Clear Round

Entry Fee: \$30

0.70M JUMPER

Eligibility: Open to all riders.

Jumps: 0.70m (2'3").

008 FRIENDS OF THE MEADOWS JUMPER - 0.70M

RIBBONS ONLY

Ribbons to 6th place.

Scoring: Table A, Article 238.2.1 One Round • **Entry Fee:** \$30

2017 Champion: Giuliana Bregliano, Ebony Eyes

0.80M CLEAR ROUND

Eligibility: Open to all riders.
Jumps: 0.80m (2'6").

009 CLEAR ROUND JUMPER - 0.80M

Scoring: Clear Round
Entry Fee: \$30

010 CLEAR ROUND JUMPER - 0.80M

Scoring: Clear Round
Entry Fee: \$30

0.80M JUMPER

Eligibility: Open to all riders.
Jumps: 0.80m (2'6").

011 FRIENDS OF THE MEADOWS WELCOME - 0.80M \$100

Ribbons to 6th place. \$100 to the owners of the winning horses to be divided as follows:

1st	2nd	3rd
\$40	\$35	\$25

Scoring: Table A, Article 238.2.1 One Round • **Entry Fee:** \$30
2017 Champion: Sarah Gillan, Reese Pak

012 FRIENDS OF THE MEADOWS JUMPER - 0.80M \$100

Ribbons to 6th place. \$100 to the owners of the winning horses to be divided as follows:

1st	2nd	3rd
\$40	\$35	\$25

Scoring: Table A, Article 238.2.1 One Round • **Entry Fee:** \$30
2017 Champion: Sarah Gillan, Reese Pak

0.90M CLEAR ROUND

Eligibility: Open to all riders.
Jumps: 0.90m (3').

013 CLEAR ROUND JUMPER - 0.90M

Scoring: Clear Round
Entry Fee: \$30

014 CLEAR ROUND JUMPER - 0.90M

Scoring: Clear Round
Entry Fee: \$30

0.90M JUMPER

Eligibility: Open to all riders.
Jumps: 0.90m (3').

015 FRIENDS OF THE MEADOWS WELCOME - 0.90M \$100

Ribbons to 6th place. \$100 to the owners of the winning horses to be divided as follows:

1st	2nd	3rd
\$40	\$35	\$25

Scoring: Table A, Article 238.2.1 One Round • **Entry Fee:** \$30
2017 Champion: Nicole Gillan, Devon Ridge Dudley

016 FRIENDS OF THE MEADOWS JUMPER - 0.90M \$100

Ribbons to 6th place. \$100 to the owners of the winning horses to be divided as follows:

1st	2nd	3rd
\$40	\$35	\$25

Scoring: Table A, Article 238.2.2 One Jump-Off • **Entry Fee:** \$30
2017 Champion: Kylie Figueira, London

JANUARY CLASSIC • JANUARY 27 & 28, 2018

Schedule will be adjusted after closing date to accommodate entries. Days are tentative and subject to change. Please be sure to refer to the adjusted schedule for the Tournament.

SATURDAY, JANUARY 27• *EQUI-PLEX*

- 001 Clear Round - 0.60m
- 002 Clear Round - 0.60m
- 005 Clear Round - 0.70m
- 006 Clear Round - 0.70m
- 009 Clear Round - 0.80m
- 010 Clear Round - 0.80m
- 013 Clear Round - 0.90m
- 014 Clear Round - 0.90m

SUNDAY, JANUARY 28• *EQUI-PLEX*

- 003 Clear Round - 0.60m
- 004 Clear Round - 0.60m
- 007 Clear Round - 0.70m
- 008 Friends of the Meadows Jumper - 0.70m
- 011 Friends of the Meadows Welcome - 0.80m
- 012 Friends of the Meadows Jumper - 0.80m
- 015 Friends of the Meadows Welcome - 0.90m
- 016 Friends of the Meadows Jumper - 0.90m

\$1,900**FEBRUARY CLASSIC I***FEBRUARY 3 & 4, 2018**Part of the Classic Series of Tournaments***OFFICIALS****TOURNAMENT SECRETARY**

Joanne Nimitz

COMPETITIONS MANAGER

Conor Charlton

JUDGE

Anne Reid Calgary, AB

COURSE DESIGNER

Peter Grant Calgary, AB

STEWARD

Sue Hawes Calgary, AB



Minimum **BRONZE LEVEL** Equestrian Canada memberships AND provincial memberships are required for **all competitors and owners** at this tournament.

Any changes to the entries must be made the day prior to each competition, by the deadline on the tournament schedule. You will be charged \$10 in addition to the entry fee for any competitions added after this deadline. Entry fees will not be refunded for those competitions withdrawn from after this deadline.

- You may enter as many horses as you wish in each competition during this Tournament. **HOWEVER THE HORSE** may only go once in each competition.
- You will be automatically entered in each competition indicated on your entry form if all required information (signatures, memberships, payment, etc) has been received.

YOU MUST CONFIRM RECEIPT OF YOUR ENTRY WITH THE SPRUCE MEADOWS TOURNAMENT OFFICE.

0.90M CLEAR ROUND

Eligibility: Open to all riders.
Jumps: 0.90m (3').

025 CLEAR ROUND JUMPER - 0.90M

Scoring: Clear Round
Entry Fee: \$30

026 CLEAR ROUND JUMPER - 0.90M

Scoring: Clear Round
Entry Fee: \$30

0.90M JUMPER

Eligibility: Open to all riders.
Jumps: 0.90m (3').

027 FRIENDS OF THE MEADOWS WELCOME - 0.90M \$100

Ribbons to 6th place. \$100 to the owners of the winning horses to be divided as follows:

1st	2nd	3rd
\$40	\$35	\$25

Scoring: Table A, Article 238.2.1 One Round • **Entry Fee:** \$30
2017 Champion: *Nyah Mellersh, MJ Jaguar*

028 FRIENDS OF THE MEADOWS JUMPER - 0.90M \$100

Ribbons to 6th place. \$100 to the owners of the winning horses to be divided as follows:

1st	2nd	3rd
\$40	\$35	\$25

Scoring: Table A, Article 238.2.1 One Round • **Entry Fee:** \$30
2017 Champion: *Nyah Mellersh, MJ Jaguar*

1.00M CLEAR ROUND

Eligibility: Open to all riders.
Jumps: 1.00m (3'3").

029 CLEAR ROUND JUMPER - 1.00M

Scoring: Clear Round
Entry Fee: \$30

030 CLEAR ROUND JUMPER - 1.00M

Scoring: Clear Round
Entry Fee: \$30

1.00M JUMPER

Eligibility: Open to all riders.
Jumps: 1.00m (3'3").

031 FRIENDS OF THE MEADOWS WELCOME - 1.00M \$100

Ribbons to 6th place. \$100 to the owners of the winning horses to be divided as follows:

1st	2nd	3rd
\$40	\$35	\$25

Scoring: Table A, Article 238.2.1 One Round • **Entry Fee:** \$30
2017 Champion: *Julia Wlasichuk, Carousel*

032 FRIENDS OF THE MEADOWS JUMPER - 1.00M \$150

Ribbons to 6th place. \$150 to the owners of the winning horses to be divided as follows:

1st	2nd	3rd
\$70	\$50	\$30

Scoring: Table A, Article 238.2.1 One Round • **Entry Fee:** \$30
2017 Champion: *Emily Stewart, Nixon*

1.10M CLEAR ROUND

Eligibility: Open to all riders.
Jumps: 1.10m (3'6").

033 CLEAR ROUND JUMPER - 1.10M

Scoring: Clear Round
Entry Fee: \$30

034 CLEAR ROUND JUMPER - 1.10M

Scoring: Clear Round
Entry Fee: \$30

1.10M JUMPER

Eligibility: Open to all riders.
Jumps: 1.10m (3'6").

035 FRIENDS OF THE MEADOWS WELCOME - 1.10M \$150

Ribbons to 6th place. \$150 to the owners of the winning horses to be divided as follows:

1st	2nd	3rd
\$70	\$50	\$30

Scoring: Table A, Article 238.2.1 One Round • **Entry Fee:** \$30
2017 Champion: *Katie Blanchard-Firth, Calido's Subtle*

036 FRIENDS OF THE MEADOWS JUMPER - 1.10M \$200

Ribbons to 6th place. \$200 to the owners of the winning horses to be divided as follows:

1st	2nd	3rd
\$80	\$70	\$50

Scoring: Table A, Article 238.2.1 One Round • **Entry Fee:** \$30
2017 Champion: *Katie Blanchard-Firth, Calido's Subtle*

1.15M CLEAR ROUND

Eligibility: Open to all riders.
Jumps: 1.15m (3'9").

037 CLEAR ROUND JUMPER - 1.15M

Scoring: Clear Round
Entry Fee: \$30

038 CLEAR ROUND JUMPER - 1.15M

Scoring: Clear Round
Entry Fee: \$30

1.15M JUMPER

Eligibility: Open to all riders.
Jumps: 1.15m (3'9").

039 FRIENDS OF THE MEADOWS WELCOME - 1.15M \$150

Ribbons to 6th place. \$150 to the owners of the winning horses to be divided as follows:

1st	2nd	3rd
\$70	\$50	\$30

Scoring: Table A, Article 238.2.1 One Round • **Entry Fee:** \$30
2017 Champion: *Natalie Pretty, Peninsula Caretina*

040 FRIENDS OF THE MEADOWS JUMPER - 1.15M \$200

Ribbons to 6th place. \$200 to the owners of the winning horses to be divided as follows:

1st	2nd	3rd
\$80	\$70	\$50

Scoring: Table A, Article 238.2.1 One Round • **Entry Fee:** \$30
2017 Champion: *Ainsley Walsh, Mercury*

1.20M CLEAR ROUND

Eligibility: Open to all riders.
Jumps: 1.20m (4').

041 CLEAR ROUND JUMPER - 1.20M

Scoring: Clear Round
Entry Fee: \$30

1.20M JUMPER

Eligibility: Open to all riders.
Jumps: 1.20m (4').

042 FRIENDS OF THE MEADOWS JUMPER - 1.20M \$250

Ribbons to 6th place. \$250 to the owners of the winning horses to be divided as follows:

1st	2nd	3rd	4th	5th	6th
\$70	\$50	\$35	\$35	\$30	\$30

Scoring: Table A, Article 238.2.2 One Jump Off • **Entry Fee:** \$30
2017 Champion: *Austin Krawitt, High Jack*

1.30M CLEAR ROUND

Eligibility: Open to all riders.
Jumps: 1.30m (4'3").

043 CLEAR ROUND JUMPER - 1.30M

Scoring: Clear Round
Entry Fee: \$30

1.30M JUMPER

Eligibility: Open to all riders.
Jumps: 1.30m (4'3").

044 FRIENDS OF THE MEADOWS JUMPER - 1.30M \$500

Ribbons to 6th place. \$500 to the owners of the winning horses to be divided as follows:

1st	2nd	3rd	4th	5th	6th
\$150	\$130	\$90	\$60	\$40	\$30

Scoring: Table A, Article 238.2.2 One Jump Off • **Entry Fee:** \$30
2017 Champion: *Paige McDougall, Larimo van de Berghoeve*

FEBRUARY CLASSIC I • FEBRUARY 3 & 4, 2018

Schedule will be adjusted after closing date to accommodate entries. Days are tentative and subject to change. Please be sure to refer to the adjusted schedule for the Tournament.

SATURDAY, FEBRUARY 3

• EQUI-PLEX

- 025 Clear Round - 0.90m
- 026 Clear Round - 0.90m
- 029 Clear Round - 1.00m
- 030 Clear Round - 1.00m
- 033 Clear Round - 1.10m
- 034 Clear Round - 1.10m
- 037 Clear Round - 1.15m
- 038 Clear Round - 1.15m
- 041 Clear Round - 1.20m
- 043 Clear Round - 1.30m

SUNDAY, FEBRUARY 4

• EQUI-PLEX

- 027 Friends of the Meadows Welcome - 0.90m
- 028 Friends of the Meadows Jumper - 0.90m
- 031 Friends of the Meadows Welcome - 1.00m
- 032 Friends of the Meadows Jumper - 1.00m
- 035 Friends of the Meadows Welcome - 1.10m
- 036 Friends of the Meadows Jumper - 1.10m
- 039 Friends of the Meadows Welcome - 1.15m
- 040 Friends of the Meadows Jumper - 1.15m
- 042 Friends of the Meadows Jumper - 1.20m
- 044 Friends of the Meadows Jumper - 1.30m

\$400**FEBRUARY CLASSIC II****FEBRUARY 17 & 18, 2018***Part of the Classic Series of Tournaments***OFFICIALS****TOURNAMENT SECRETARY**

Joanne Nimitz

COMPETITIONS MANAGER

Conor Charlton

JUDGE

Anne Reid Calgary, AB

COURSE DESIGNER

Peter Grant Calgary, AB

STEWARD

Sue Hawes Calgary, AB



Minimum **BRONZE LEVEL** Equestrian Canada memberships AND provincial memberships are required for **all competitors and owners** at this tournament.

Any changes to the entries must be made the day prior to each competition, by the deadline on the tournament schedule. You will be charged \$10 in addition to the entry fee for any competitions added after this deadline. Entry fees will not be refunded for those competitions withdrawn from after this deadline.

- You may enter as many horses as you wish in each competition during this Tournament. **HOWEVER THE HORSE** may only go once in each competition.
- You will be automatically entered in each competition indicated on your entry form if all required information (signatures, memberships, payment, etc) has been received.

YOU MUST CONFIRM RECEIPT OF YOUR ENTRY WITH THE SPRUCE MEADOWS TOURNAMENT OFFICE.

0.60M CLEAR ROUND

Eligibility: Open to all riders.
Jumps: 0.60m (2').

050 CLEAR ROUND JUMPER - 0.60M

Scoring: Clear Round
Entry Fee: \$30

051 CLEAR ROUND JUMPER - 0.60M

Scoring: Clear Round
Entry Fee: \$30

052 CLEAR ROUND JUMPER - 0.60M

Scoring: Clear Round
Entry Fee: \$30

053 CLEAR ROUND JUMPER - 0.60M

Scoring: Clear Round
Entry Fee: \$30

0.70M CLEAR ROUND

Eligibility: Open to all riders.
Jumps: 0.70m (2'3").

054 CLEAR ROUND JUMPER - 0.70M

Scoring: Clear Round
Entry Fee: \$30

055 CLEAR ROUND JUMPER - 0.70M

Scoring: Clear Round
Entry Fee: \$30

056 CLEAR ROUND JUMPER - 0.70M

Scoring: Clear Round
Entry Fee: \$30

0.70M JUMPER

Eligibility: Open to all riders.
Jumps: 0.70m (2'3").

057 FRIENDS OF THE MEADOWS WELCOME - 0.70M

RIBBONS ONLY

Ribbons to 6th place.
Scoring: Table A, Article 238.2.1 One Round • **Entry Fee:** \$30
2017 Champion: *Taite Meyer, Red Storm*

0.80M CLEAR ROUND

Eligibility: Open to all riders.
Jumps: 0.80m (2'6").

058 CLEAR ROUND JUMPER - 0.80M

Scoring: Clear Round
Entry Fee: \$30

059 CLEAR ROUND JUMPER - 0.80M

Scoring: Clear Round
Entry Fee: \$30

0.80M JUMPER

Eligibility: Open to all riders.
Jumps: 0.80m (2'6").

060 FRIENDS OF THE MEADOWS WELCOME - 0.80M \$100

Ribbons to 6th place. \$100 to the owners of the winning horses to be divided as follows:

1st	2nd	3rd
\$40	\$35	\$25

Scoring: Table A, Article 238.2.1 One Round • **Entry Fee:** \$30
2017 Champion: *Fenella Murphy, Grand Filou*

061 FRIENDS OF THE MEADOWS JUMPER - 0.80M \$100

Ribbons to 6th place. \$100 to the owners of the winning horses to be divided as follows:

1st	2nd	3rd
\$40	\$35	\$25

Scoring: Table A, Article 238.2.1 One Round • **Entry Fee:** \$30
2017 Champion: *Adam Ramson, First Impression*

0.90M CLEAR ROUND

Eligibility: Open to all riders.

Jumps: 0.90m (3').

062 CLEAR ROUND JUMPER - 0.90M

Scoring: Clear Round

Entry Fee: \$30

063 CLEAR ROUND JUMPER - 0.90M

Scoring: Clear Round

Entry Fee: \$30

0.90M JUMPER

Eligibility: Open to all riders.

Jumps: 0.90m (3').

064 FRIENDS OF THE MEADOWS WELCOME - 0.90M \$100

Ribbons to 6th place. \$100 to the owners of the winning horses to be divided as follows:

1st	2nd	3rd
\$40	\$35	\$25

Scoring: Table A, Article 238.2.1 One Round • **Entry Fee:** \$30

2017 Champion: *Ava Burake, Athena*

065 FRIENDS OF THE MEADOWS JUMPER - 0.90M \$100

Ribbons to 6th place. \$100 to the owners of the winning horses to be divided as follows:

1st	2nd	3rd
\$40	\$35	\$25

Scoring: Table A, Article 238.2.2 One Jump Off • **Entry Fee:** \$30

2017 Champion: *Chantelle Godfrey, Flipside*

FEBRUARY CLASSIC II • FEBRUARY 17 & 18, 2018

Schedule will be adjusted after closing date to accommodate entries. Days are tentative and subject to change. Please be sure to refer to the adjusted schedule for the Tournament.

SATURDAY, FEBRUARY 17

• EQUI-PLEX

- 050 Clear Round - 0.60m
- 051 Clear Round - 0.60m
- 054 Clear Round - 0.70m
- 055 Clear Round - 0.70m
- 058 Clear Round - 0.80m
- 059 Clear Round - 0.80m
- 062 Clear Round - 0.90m
- 063 Clear Round - 0.90m

SUNDAY, FEBRUARY 18

• EQUI-PLEX

- 052 Clear Round - 0.60m
- 053 Clear Round - 0.60m
- 056 Clear Round - 0.70m
- 057 Friends of the Meadows Jumper - 0.70m
- 060 Friends of the Meadows Welcome - 0.80m
- 061 Friends of the Meadows Jumper - 0.80m
- 064 Friends of the Meadows Welcome - 0.90m
- 065 Friends of the Meadows Jumper - 0.90m

\$1,600
FEBRUARY CLASSIC III
FEBRUARY 24 & 25, 2018

Part of the Classic Series of Tournaments

OFFICIALS

TOURNAMENT SECRETARY

Joanne Nimitz

COMPETITIONS MANAGER

Conor Charlton

JUDGE

Anne Reid Calgary, AB

COURSE DESIGNER

Joey Rycroft Calgary, AB

STEWARD

Sue Hawes Calgary, AB



Minimum **BRONZE LEVEL** Equestrian Canada memberships AND provincial memberships are required for **all competitors and owners** at this tournament.

Any changes to the entries must be made the day prior to each competition, by the deadline on the tournament schedule. You will be charged \$10 in addition to the entry fee for any competitions added after this deadline. Entry fees will not be refunded for those competitions withdrawn from after this deadline.

- You may enter as many horses as you wish in each competition during this Tournament. **HOWEVER THE HORSE** may only go once in each competition.
- You will be automatically entered in each competition indicated on your entry form if all required information (signatures, memberships, payment, etc) has been received.

YOU MUST CONFIRM RECEIPT OF YOUR ENTRY WITH THE SPRUCE MEADOWS TOURNAMENT OFFICE.

0.90M CLEAR ROUND

Eligibility: Open to all riders.

Jumps: 0.90m (3').

075 CLEAR ROUND JUMPER - 0.90M

Scoring: Clear Round

Entry Fee: \$30

076 CLEAR ROUND JUMPER - 0.90M

Scoring: Clear Round

Entry Fee: \$30

0.90M JUMPER

Eligibility: Open to all riders.

Jumps: 0.90m (3').

077 FRIENDS OF THE MEADOWS WELCOME - 0.90M \$100

Ribbons to 6th place. \$100 to the owners of the winning horses to be divided as follows:

1st	2nd	3rd
\$40	\$35	\$25

Scoring: Table A, Article 238.2.1 One Round • **Entry Fee:** \$30

2017 Champion: Serenity Enders, Kolour Kode

078 FRIENDS OF THE MEADOWS JUMPER - 0.90M \$100

Ribbons to 6th place. \$100 to the owners of the winning horses to be divided as follows:

1st	2nd	3rd
\$40	\$35	\$25

Scoring: Table A, Article 238.2.1 One Round • **Entry Fee:** \$30

2017 Champion: Nicole Gillan, Devon Ridge Dudley

1.00M CLEAR ROUND

Eligibility: Open to all riders.

Jumps: 1.00m (3'3").

079 CLEAR ROUND JUMPER - 1.00M

Scoring: Clear Round

Entry Fee: \$30

080 CLEAR ROUND JUMPER - 1.00M

Scoring: Clear Round

Entry Fee: \$30

1.00M JUMPER

Eligibility: Open to all riders.
Jumps: 1.00m (3'3").

081 FRIENDS OF THE MEADOWS WELCOME - 1.00M \$100

Ribbons to 6th place. \$100 to the owners of the winning horses to be divided as follows:

1st	2nd	3rd
\$40	\$35	\$25

Scoring: Table A, Article 238.2.1 One Round • **Entry Fee:** \$30
2017 Champion: Erin Bonner, BB King

082 FRIENDS OF THE MEADOWS JUMPER - 1.00M \$150

Ribbons to 6th place. \$150 to the owners of the winning horses to be divided as follows:

1st	2nd	3rd
\$70	\$50	\$30

Scoring: Table A, Article 238.2.1 One Round • **Entry Fee:** \$30
2017 Champion: Erin Bonner, BB King

1.10M CLEAR ROUND

Eligibility: Open to all riders.
Jumps: 1.10m (3'6").

083 CLEAR ROUND JUMPER - 1.10M

Scoring: Clear Round
Entry Fee: \$30

084 CLEAR ROUND JUMPER - 1.10M

Scoring: Clear Round
Entry Fee: \$30

1.10M JUMPER

Eligibility: Open to all riders.
Jumps: 1.10m (3'6").

085 FRIENDS OF THE MEADOWS WELCOME - 1.10M \$150

Ribbons to 6th place. \$150 to the owners of the winning horses to be divided as follows:

1st	2nd	3rd
\$70	\$50	\$30

Scoring: Table A, Article 238.2.1 One Round • **Entry Fee:** \$30
2017 Champion: Emily Harris, Grosso Gold

086 FRIENDS OF THE MEADOWS JUMPER - 1.10M \$200

Ribbons to 6th place. \$200 to the owners of the winning horses to be divided as follows:

1st	2nd	3rd
\$80	\$70	\$50

Scoring: Table A, Article 238.2.1 One Round • **Entry Fee:** \$30
2017 Champion: Beverly Malcolm, Best of Times

1.20M CLEAR ROUND

Eligibility: Open to all riders.
Jumps: 1.20m (4').

087 CLEAR ROUND JUMPER - 1.20M

Scoring: Clear Round
Entry Fee: \$30

1.20M JUMPER

Eligibility: Open to all riders.
Jumps: 1.20m (4').

088 FRIENDS OF THE MEADOWS JUMPER - 1.20M \$300

Ribbons to 6th place. \$300 to the owners of the winning horses to be divided as follows:

1st	2nd	3rd	4th	5th	6th
\$90	\$70	\$50	\$40	\$25	\$25

Scoring: Table A, Article 238.2.2 One Jump Off • **Entry Fee:** \$30
2017 Champion: Susan Anderson, Seven Shades of Grey

1.30M CLEAR ROUND

Eligibility: Open to all riders.
Jumps: 1.30m (4'3").

089 CLEAR ROUND JUMPER - 1.30M

Scoring: Clear Round
Entry Fee: \$30

1.30M JUMPER

Eligibility: Open to all riders.
Jumps: 1.30m (4'3").

090 FRIENDS OF THE MEADOWS BARRAGE - 1.30M \$500

Ribbons to 6th place. \$500 to the owners of the winning horses to be divided as follows:

1st	2nd	3rd	4th	5th	6th
\$150	\$130	\$90	\$60	\$40	\$30

Scoring: Table A, Article 238.2.2 One Jump Off • **Entry Fee:** \$30
2017 Champion: Andrew More, Capireena

2018 TENTATIVE SCHEDULE

FEBRUARY CLASSIC III • FEBRUARY 25 & 26, 2017

Schedule will be adjusted after closing date to accommodate entries. Days are tentative and subject to change. Please be sure to refer to the adjusted schedule for the Tournament.

SATURDAY, FEBRUARY 25

- EQUI-PLEX

- 075 Clear Round - 0.90m
- 076 Clear Round - 0.90m
- 079 Clear Round - 1.00m
- 080 Clear Round - 1.00m
- 083 Clear Round - 1.10m
- 084 Clear Round - 1.10m
- 087 Clear Round - 1.20m
- 089 Clear Round - 1.30m

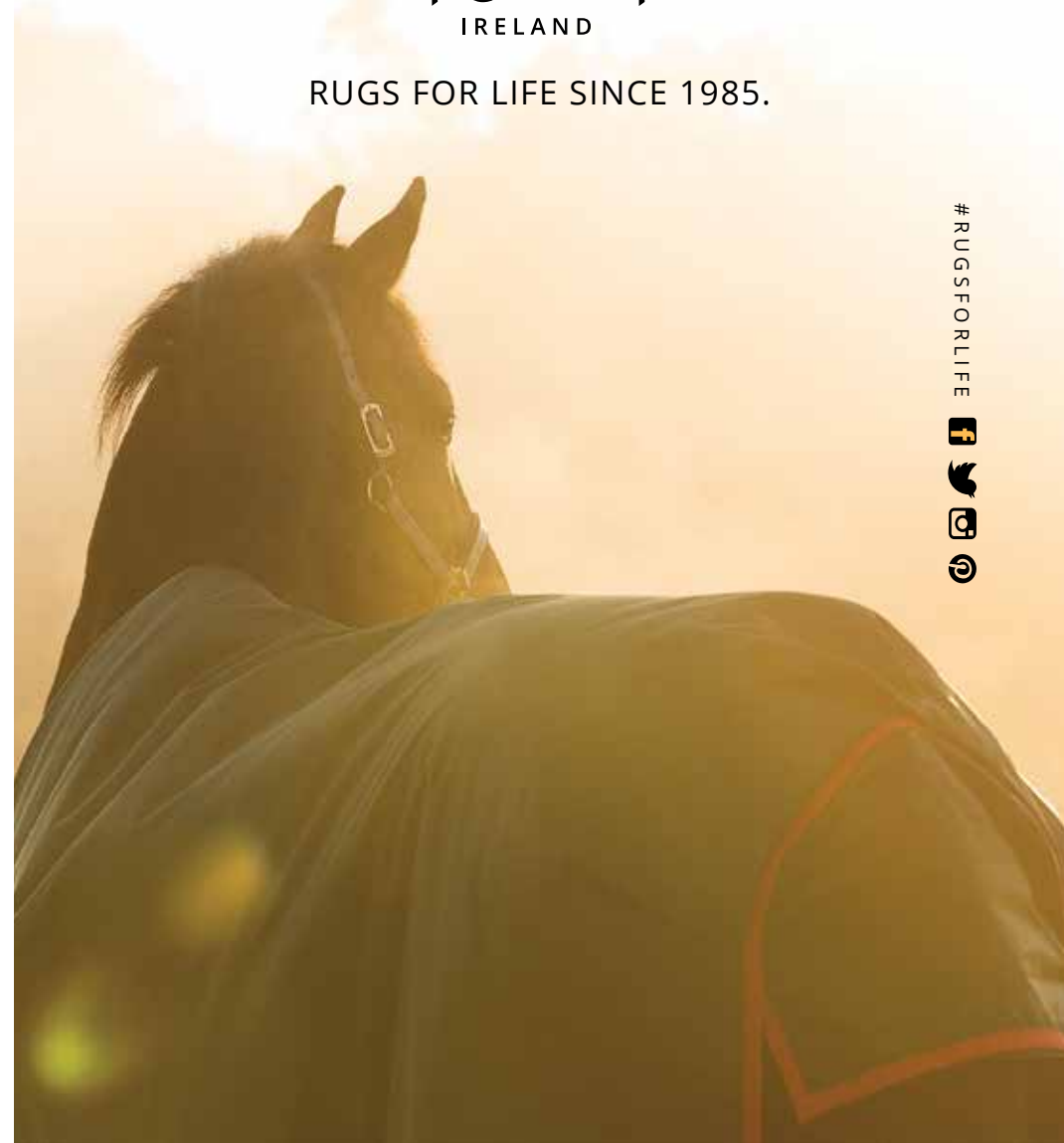
SUNDAY, FEBRUARY 26

- EQUI-PLEX

- 077 Friends of the Meadows Welcome - 0.90m
- 078 Friends of the Meadows Jumper - 0.90m
- 081 Friends of the Meadows Welcome - 1.00m
- 082 Friends of the Meadows Jumper - 1.00m
- 085 Friends of the Meadows Welcome - 1.10m
- 086 Friends of the Meadows Jumper - 1.10m
- 088 Friends of the Meadows Jumper - 1.20m
- 090 Friends of the Meadows Jumper - 1.30m



RUGS FOR LIFE SINCE 1985.



#RUGSFORLIFE
f
t
i
p

PROUDLY SUPPORTING SPRUCE MEADOWS TOURNAMENTS

IN STORE | ONLINE | MOBILE



SPRUGE MEADOWS

18011 Spruce Meadows Way SW
Calgary, Alberta, Canada
T. 403.974.4200 F. 403.974.4266
www.sprucemeadows.com